

Description

Model MS23 is a medium velocity water spray nozzle which delivers a full cone spray of water from the nozzle in an angle of 90° or 120°. The nozzle functions with a water pressure of 2-4 bar making it possible to utilize the nozzles in very harsh wind conditions.

Model MS23 Nozzles have a K-factor of 16 (liter/minute/ $\sqrt{\text{bar}}$).

Model MS23 Medium Velocity Spray Nozzles are available with 1/2" BSP & NPT male connections.

Model MS23 Medium Velocity Spray Nozzles are available with and without nozzle strainers. Nozzles should only be utilized in pipe systems with clean internal pipe surfaces and cavities. Nozzles should be installed in systems with a main-line water strainer with mesh size less than 3mm.



Applications

The Model MS23-90 nozzle is designed for fire protection and cooling of primarily tanks, building and structures against hydrocarbon fires.

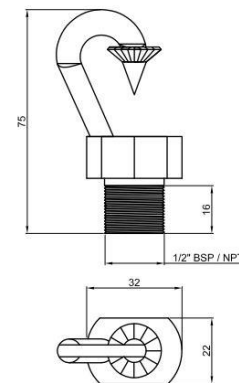
Approvals

The Model HS23-120 Titanium and Naval Brass nozzles are FM approved.

Technical data

General Description			
Approved water pressure	2-4 bar		
Spray Angle	90° +5%-10%	120° (+5% -10%)	
K-value	23 +12%/-0% (l/min/ $\sqrt{\text{bar}}$)	23 +12%-0% (l/min/ $\sqrt{\text{bar}}$)	
Connections	1/2" BSP / 1/2" NPT male		
Nozzle Materials and weight	Brass	CuZn58.	0,102 Kg
	Brass w. NiSn plating	CuZn58+NiSn	0,102 Kg
	Naval Brass*	CuZn35Ni	0,102 Kg
	Stainless Steel	AISI 316	0,096 Kg
	Titanium	Grade 2	0,056Kg
Strainer Materials	Copper	Cu	
	Copper w. NiSn plating	Cu + NiSn	
	Stainless Steel	AISI 316	
	Titanium	Grade 2	

Dimension



Only Naval Brass and Titanium nozzle w/stainless steel strainer are FM Approved

Contact

For further information on **FIRE KILL™** products, please contact our sales department at Sales@vidaps.dk

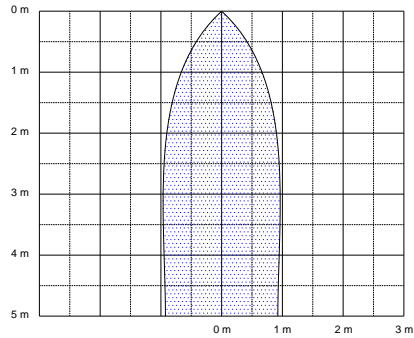


Installation

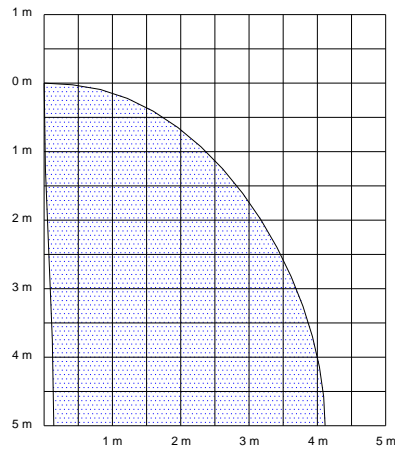
Piping should be flushed prior to installation of the nozzles. The nozzles can be used for both fresh water and sea water applications.

Spray pattern at 2-4 Model MS23-90

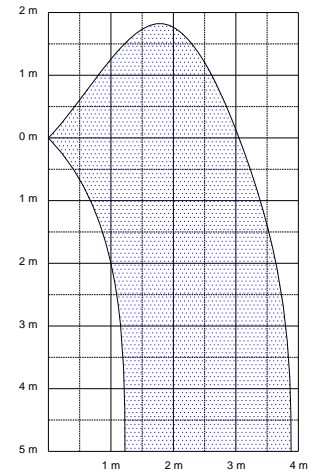
Vertical



Angled 45 dg

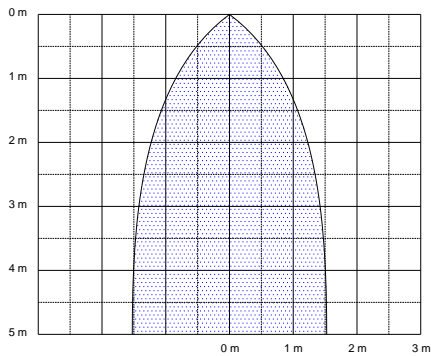


Horizontal

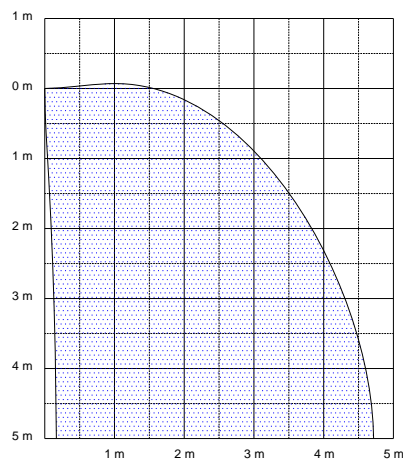


Spray pattern at 2-4 Model MS23-120

Vertical



Angled 45 dg



Horizontal

