

Description

Model MS16 is a medium velocity water spray nozzle which delivers a full cone spray of water from the nozzle in an angle of 90° or 120°. The nozzle functions with a water pressure of 2-4 bar making it possible to utilize the nozzles in very harsh wind conditions.

Model MS16 Nozzles have a K-factor of 16 (liter/minute/ $\sqrt{\text{bar}}$).

Model MS16 Medium Velocity Spray Nozzles are available with 1/2" BSP & NPT male connections.

Model MS16 Medium Velocity Spray Nozzles are available with and without nozzle strainers. Nozzles should only be utilized in pipe systems with clean internal pipe surfaces and cavities. Nozzles should be installed in systems with a main-line water strainer with mesh size less than 3mm.



Applications

The Model MS16 nozzle is designed for fire protection and cooling of primarily tanks, building and structures against hydrocarbon fires.

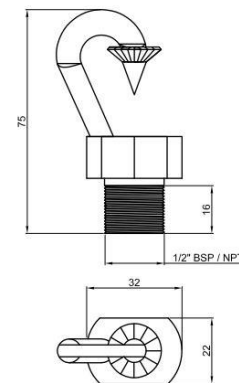
Approvals

The Model MS16 Titanium and Naval Brass nozzles are FM approved.

Technical data

| General Description | | | |
|-----------------------------|--|--|----------|
| Approved water pressure | 2-4 bar | | |
| Spray Angle | 90° (+5%-10%) | 120° (+5% -20%) | |
| K-value | 16,0 +/-5% (l/min/ $\sqrt{\text{bar}}$) | 16,0 +/-5% (l/min/ $\sqrt{\text{bar}}$) | |
| Connections | 1/2" BSP / 1/2" NPT male | | |
| Nozzle Materials and weight | Brass | CuZn58. | 0,102 Kg |
| | Brass w. NiSn plating | CuZn58+NiSn | 0,102 Kg |
| | Naval Brass* | CuZn35Ni | 0,102 Kg |
| | Stainless Steel | AISI 316 | 0,096 Kg |
| | Titanium | Grade 2 | 0,056Kg |
| Strainer Materials | Copper | Cu | |
| | Copper w. NiSn plating | Cu + NiSn | |
| | Stainless Steel | AISI 316 | |
| | Titanium | Grade 2 | |

Dimension



Only Naval Brass and Titanium nozzle w/stainless steel strainer are FM Approved

Contact

For further information on **FIRE KILL™** products, please contact our sales department at Sales@vidaps.dk

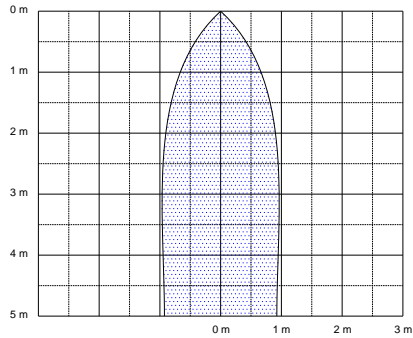


Installation

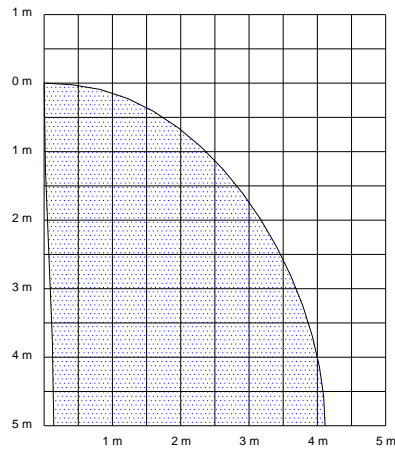
Piping should be flushed prior to installation of the nozzles. The nozzles can be used for both fresh water and sea water applications.

Spray pattern at 2-4 Model MS16-90

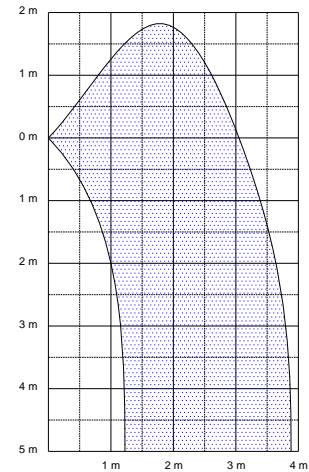
Vertical



Angled 45 dg

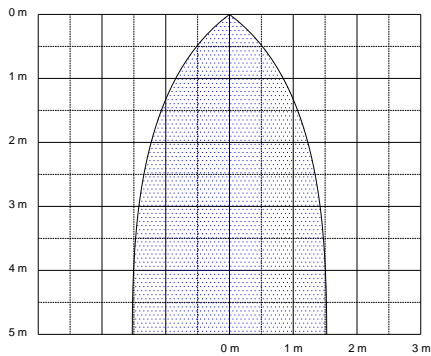


Horizontal

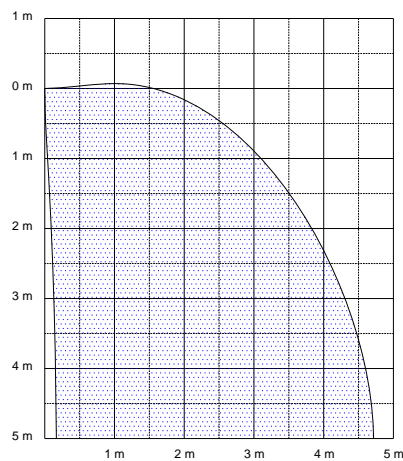


Spray pattern at 2-4 Model MS16-120

Vertical



Angled 45 dg



Horizontal

